
The primate collection at the Natural Science Museum of Barcelona (Spain)

C. Veracini & E. Garcia–Franquesa

Veracini, C. & Garcia–Franquesa, E., 2010. The primate collection at the Natural Science Museum of Barcelona (Spain). *Arxius de Miscel·lània Zoològica*, vol. 8: 15–52, <https://doi.org/10.32800/amz.2010.08.0015>

Abstract

The primate collection at the Natural Science Museum of Barcelona (Spain).— The Natural Science Museum of Barcelona (MCNB) houses a total of 309 specimens of non–human primates. The collection comprises 102 stuffed animals, 33 skins, 73 skeletons, 24 postcranial skeletons, eight mounted skeletons, 54 skulls, three whole animals in alcohol, and 31 other samples (bones and other). Over the last two years the collection has been completely reviewed and reorganized. The collection contains 39 genera and includes a wide range of extant non–human primates. It houses specimens from Africa, Asia and South and Central America, with 10.26% of samples being Strepsirrhines, 26.92% New World monkeys and 62.18% Old World monkeys. The Museum houses some endangered or rare species. In this work we present the contents of the recent review with new and updated taxonomic attributions together with a complete list of samples that includes information on age, class and preservation status for each specimen.

Key words: Naturalistic collection, Primates, Review

Resumen

La colección de primates del Museo de Ciencias Naturales de Barcelona (España).— El MCNB conserva un total de 309 ejemplares de primates no humanos. La colección consta de 102 ejemplares disecados, 33 pieles, 73 esqueletos, 24 esqueletos postcraneales, ocho esqueletos montados, 54 cráneos, 3 animales enteros en alcohol, y 31 muestras de otro tipo (huesos y otros). En los últimos dos años se ha llevado a cabo una revisión completa y una reorganización de la colección. Con 39 géneros, la colección incluye una amplia gama de primates no humanos. Contiene muestras de África, Asia y América del Sur y Central, el 10,26% son estrepsirrinos, el 26,92% monos del Nuevo Mundo y el 62,18% del Viejo Mundo. El Museo alberga algunas especies en peligro de extinción o raras. En este trabajo se presentan los resultados de la revisión taxonómica con resultados actualizados de las determinaciones llevadas a cabo, con una lista completa de las muestras incluyendo información sobre la edad, la clase y el tipo de muestra.

Palabras clave: Colección de Ciencias Naturales, Primates, Revisión

Resum

La col·lecció de primats del Museu de Ciències Naturals de Barcelona (Espanya).— L'MCNB conserva un total de 309 exemplars de primats no humans. La col·lecció consta de 102 exemplars dissecats, 33 pells, 73 esquelets, 24 esquelets postcranials, vuit esquelets muntats, 54 cranis, tres animals sencers en alcohol i 31 mostres d'altres tipus (ossos o altres). Els darrers anys s'ha portat a terme una revisió completa i una reorganització de la col·lecció. Amb 39 gèneres, aquesta inclou una àmplia gamma de primats no humans. Conté mostres d'Àfrica, Àsia i Amèrica del Sud i Central, el 10,26% són estrepsirins, el 26,92% micos del Nou Món i el 62,18% micos del Vell Món. El Museu conserva algunes espècies en perill d'extinció o rares. En aquest treball es presenten els resultats de la revisió taxonòmica amb resultats actualitzats de les determinacions portades a terme, amb una llista completa de les mostres que inclou informació sobre l'edat, la classe i el tipus de mostra.

Paraules clau: Col·lecció de Ciències Naturals, Primats, Revisió

Rebut: 09/09/2010; Acceptació condicional: 15/10/2010; Acceptació definitiva: 22/11/2010

C. Veracini⁽¹⁾, *Diplo di Filosofia, Univ. degli Studi di Pisa, Via Paoli 15, Pisa, Italy.*— *E. Garcia–Franquesa*⁽²⁾, *Museu de Ciències Naturals de Barcelona, Psg. Picasso s/n., 08003 Barcelona, Spain.*

⁽¹⁾ E-mail: cpfveracini@yahoo.com

⁽²⁾ E-mail: egarciafr@bcn.cat

Introduction

The primate collection at the Natural Science Museum of Barcelona (MCNB) (fig. 1) is one of the most important in Spain. It includes a total of 328 samples belonging to 309 nonhuman primate specimens. Most part of the material belongs to the osteological collection (73 complete skeletons, 24 postcranial skeletons, eight mounted skeletons, 54 skulls and 23 other bones). Skins are preserved as stuffed (102) (fig. 2) or as study skins (33). Several samples of bones and skin fragments are also preserved. Three whole animals and 8 other samples (some mold and replica, and a head) are stored/conserved. Some years ago the Museum also started a new collection, the tissue bank, which is now composed of 25 primate samples conserved in alcohol. The scientific value of the collection is testified to by the range of primate variability and the fact that many of the samples were free–ranging animals collected several decades ago. Barcelona Zoo provided 128 samples that are in a good state of preservation. In 2008, a complete review of the collection was begun. The taxonomic attributions were newly assessed and updated, the preservation status of the entire collection was monitored. This paper presents the results of this work and gives a complete list of samples including information on age, class and preservation status for each specimen.

Some historical notes about the Collection

The Museum of Zoology, now The Natural Science Museum of Barcelona, was founded in 1882 by a bequest from the estate of Mr. Francesc Martorell Peña. The collection is



© MCNB / J. Vidal

Fig. 1. A primate exhibition hall with the showcase exhibited until May 2010.

Fig. 1. Exposición de primates en una de las vitrinas de la exposición permanente del Museo hasta Mayo de 2010.



© MCNB / O. Boet

Fig. 2. Stuffed primates in the storeroom.

Fig. 2. Sala de reserva de primates dissecados.

the result of contributions from expeditions (fig. 3), donations and purchases from all over the world since that time. Joan Baptista Aguilar-Amat (1881–1936) was a scientist and the curator of vertebrates at the Museum of Natural Science of Barcelona; in 1929 he participated in a six-month expedition to Indochina organized by the naturalist Emili Juncadella. This trip started in Barcelona, crossed through France and reaching India before ending in Indochina. Study skins of birds and also mammals were brought back, including the two specimens of *Loris tardigradus* collected in Colombo (Sri Lanka). The oldest primates of the collection are three specimens received in 1888 from the Antiga College, a private college in Barcelona. At that time, the Museum purchased many specimens from private taxidermists and collectors who were very common in Barcelona at the end of 19th century. For instance, six animals were purchased from the Casa Darder (1883–1890) and others from the seller Lluís Soler Pujol. The Museum also purchased animals from dealers Unlauff in Germany and Rowland in England. In the 1940s and 50s the museum purchased a collection of ten primates from Leopoldo Gomez Alonso, a collector who travelled in Ecuador. In the last decades of the 20th century the Museum also received several donations from private religious schools. The Salesians (Salesian Society) donated two specimens and the Jesuitas (Society of Jesus) donated 12 specimens in 1999. These schools often purchased animals from the Casa Soler Pujol of Barcelona or collected animals at their overseas missions. In most cases they did not record the geographical origins of the animals. A good exception, however, is the collection of 13



Fig. 3. *Loris tardigradus* (Linnaeus, 1758): some of the oldest specimens in the collection, collected in Sri Lanka during the expedition to Indochina in 1929.

Fig. 3. Loris tardigradus (Linnaeus, 1758): unos de los especímenes más antiguos de la colección, recolectados en Sri Lanka durante la expedición hacia Indochina en 1929.

primates donated by the Order of Friars Minor Capuchin that operated in the Colombian Amazon. All of these specimens have the exact site of collection noted. The Museum also received 128 specimens from the Barcelona Zoo with which it has collaborated since 1888. Some of these specimens belong to the Zoo's early years (1888–1935), while others are from the last several decades. Collaboration with the Zoo allowed the Museum to collect a good representation of primate taxa. The Museum has its own taxidermy department (fig. 4) and its own scientific collection, consisting of both osteological specimens and skins and tissues.

It is unfortunate that the heterogeneous provenance and lack of historical data available for many specimens prevents us from generating a complete dataset for each exemplar. We do not know, the dates of arrival for some 139 specimens, for example, though we do know they were received before 1935; for this reason we consider them part of the old collection of the first epoch of the MCNB. At the same time, the Museum has an historic archive that has only been partially studied; further studies will allow better documentation of the history of the collection. The collection is fully computerized. Primates with recollection information are also available at GBIF (Global Biodiversity Information Facility). At the time of preparing this paper, consultation and loan are closed due to the remodeling project presently underway at the Museum. Scientific consultation and loan, however, remain available to



Fig. 4. Preparation of a *Gorilla gorilla* male received from the Barcelona Zoo.

Fig. 4. Preparación de un macho de *Gorilla gorilla* procedente del Zoo de Barcelona.

the scientific community at all times.

Materials and methods

The systematic reference originally adopted for the mammal collection at MCNB was that of Honacki et al. (1982). As mammal classification has been modified in recent years by a large number of studies, the collection is now classified in accordance with the most recent works of Wilson & Reeder, (2005). As a general reference for primates, taxonomy follows Groves (2001, 2005) supplemented by Rylands et al. (2000), Grubb et al. (2003), Brandon-Jones (2004), and Mittermeier et al. (2008). Taxon recognition is based upon morphological keys for taxonomic rank in accordance with the descriptions available in the literature (Auricchio, 1995; Rowe, 1996; Swindler, 2002; Walker & Molur 2007; Mittermeier et al., 2008; Kingdon, 2004; Defler, 2004).

Morphological analysis

In assessing the taxon we considered the following aspects: 1. Sex; 2. Estimated age; 3. Data of capture and possible fur and skin colour alteration due to light exposure; and 4. Diagnostic keys of the taxon considered.

Provenance and geographic distribution:

Information on the exact provenance of the specimens was often unknown (see table 1). Thus for precise identification priority was given to specimen morphology rather than to geographic provenance. In some cases a cross reference reconstruction was made considering the collectors, the year of collection and also the origin of other animals gathered

Table 1. List of the genera: N. Number of specimens.
 Tabla 1. Lista de los géneros: N. Número de especímenes.

Genus	N	Genus	N
<i>Eulemur</i>	7	<i>Ateles</i>	7
<i>Lemur</i>	3	<i>Lagothrix</i>	4
<i>Varecia</i>	2	<i>Cercocebus</i>	13
<i>Avahi</i>	1	<i>Cercopithecus</i>	23
<i>Indri</i>	1	<i>Chlorocebus</i>	8
<i>Propithecus</i>	2	<i>Erythrocebus</i>	10
<i>Loris</i>	2	<i>Macaca</i>	33
<i>Nycticebus</i>	1	<i>Miopithecus</i>	4
<i>Perodictus</i>	3	<i>Mandrillus</i>	18
<i>Galago</i>	8	<i>Papio</i>	11
<i>Otolemur</i>	2	<i>Colobus</i>	11
<i>Callithrix</i>	12	<i>Ptilocolobus</i>	1
<i>Mico</i>	3	<i>Semnopithecus</i>	1
<i>Cebuella</i>	4	<i>Hylobates</i>	4
<i>Leontopithecus</i>	5	<i>Nomascus</i>	1
<i>Saguinus</i>	11	<i>Gorilla</i>	23
<i>Cebus</i>	17	<i>Pan</i>	15
<i>Saimiri</i>	5	<i>Pongo</i>	8
<i>Cacajao</i>	1	Primates	2
<i>Pithecia</i>	5	Cercopithecidae	6
<i>Alouatta</i>	8	Hominidae	3

from the same source. We indicated the subspecies only when the provenance was known or when the taxon was easy to identify.

Taxonomic notes to annex 1

We follow Groves (2001) who uses the genus *Galago* for all bush–babies although Grubb et al. (2003) placed all the smaller *Galago* members' of the *demidovii*, *orinus*, *zanzibaricus* and *granti* groups in the *Galagoides*, leaving the *senegalensis* group in *Galago* while the *alleni* group is assigned to *Sciurocheirus*. The genus *Galagoides* includes small forest species with a body mass of less than 200 g, and with shorter limbs and lighter build than the *Galago sensu stricto*.

We retain the genera *Mico* and *Cebuella* as indicated by Rylands et al. (2000), although Groves (2001) and Groves (2005) consider them as subgenera.

Saguinus: we follow Groves (2001) and Groves (2005) who considered *S. graellsii* as a full species, while Rylands et al. (2000) consider it a subspecies of *S. mystax*.

Chlorocebus: Groves (2001) and Groves (2005) recognizes this genus while Grubb et al. (2003) maintain it in the genus *Cercopithecus*.

Cercopithecus roloway is now considered a full species by Groves (2005).

Semnopithecus acheson is raised to the rank of full species by Walker & Molur (2007) It is synonymous with *S. dussumieri* in Groves (2001). Groves (2005) considers all the taxa

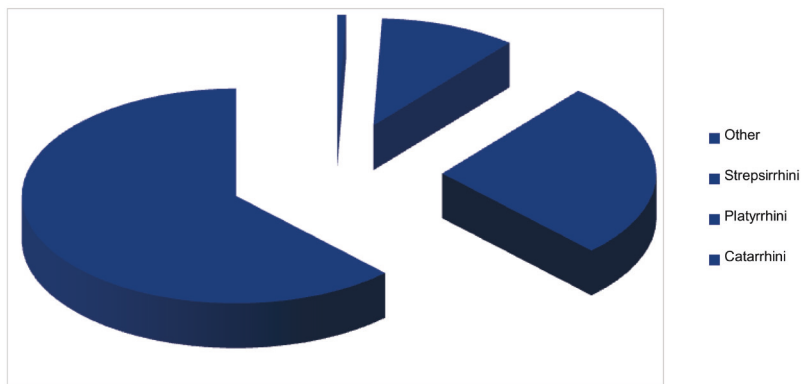


Fig. 5. Percentage of the groups of primates in the collection.

Fig. 5. Porcentaje de los diferentes grupos de primates en la colección.

of *Semnopithecus* as a subspecies of *Semnopithecus entellus*.

Nomascus: we follow the work of Mootnick & Groves (2005) who consider this a full genus.

Results and discussion

As the result of the review a total of 57 primates were identified to family, genera or species level. The exhaustive work done during the review has led to many new determinations for several specimens (see annex 1).

The MCNB primate collection houses 347 samples which correspond to 309 specimens. The specimens belong to 11 different families and 39 genera, so the whole series well represents the variability of extant non-human primates containing specimens from Africa, Asia and South and Central America. Due to the unknown provenance of many specimens and to the change in their colouration, a few specimens remain without certain identification.

The Strepsirrhini suborder represents a minor part of the collection (ca. 10%), with 32 specimens (fig. 5). Most of these belong to the Galagidae and Lemuridae families. Most notable is a specimen we assigned provisionally to *Avahi cleesei* (fig. 6), a species recently described by Thalman & Geissman (2005). Its geographical range is still unclear but it seems to have a restricted distribution in Madagascar and it is very likely to be Endangered or Critically Endangered. We do not know the exact site of origin of our specimen so other analyses are needed to confirm this taxonomic identification. The five specimens of *Galago (galagoides) demidoff* from Cameroon are in a good state of preservation, with skin and complete skull.

The variety of the Neotropical primates is well represented in the collection with 83 specimens accounting for 27% of the entire collection, *Cebus*, *Callithrix* and *Saguinus* being the best represented genera. The collection houses 13 specimens from *La Chorrera*, a locality in the Andean region of Colombian Amazon (latitude: 0° 43' 60" S, longitude: 70° 1' 0" W). These were donated to the museum by the Order of Friars Minor Capuchin and all include the exact place of collection.

Old world monkeys represent the largest section (62%) of the collection, with Cercopithecidae being the best-represented group in the collection, largely account of the high prevalence of *Cercopithecus*, *Macaca* (fig. 7) and *Mandrillus* specimens. There are 16 Colobinae specimens,



Fig. 6. Specimen of an adult male of *Avahi cleesei* from Madagascar purchased by the Museum in 1883.

Fig. 6. Especimen de un macho adulto de *Avahi cleesei* procedente de Madagascar, comprado por el Museo en 1883.

one from the Asian clade and 15 from the African clade. For historical reasons many of these old world monkeys were collected in Equatorial Guinea, a former Spanish colony. In 1919 the Board of the Natural Science Museum in Barcelona decided to support the proposal of Manuel Martínez de la Escalera and his son Fernando Martínez de la Escalera about an expedition to Equatorial Guinea to collect wild animal specimens for the Museum of Natural Science of Barcelona. In this expedition both invertebrates and vertebrates were collected and brought back to the Museum. Of particular interest is a specimen of *Ptilocolobus pennanti* (fig. 8) which is stuffed and in good condition. It was probably collected on Bioko Island.

The five specimens in the Hylobatidae family represent the genera *Hylobates* and *Nomascus*. The Hominidae family is represented by 57 specimens.

The presence of many specimens of *Gorilla gorilla*, members of the “Copito de Nieve” family group, donated by the Barcelona Zoo, is especially noteworthy.

Many specimens are included in the Critically Endangered IUCN Categories (IUCN, 2010); these include *Varecia variegata* (Kerr, 1792), *Ateles fusciceps* Gray, 1866, *Saguinus*

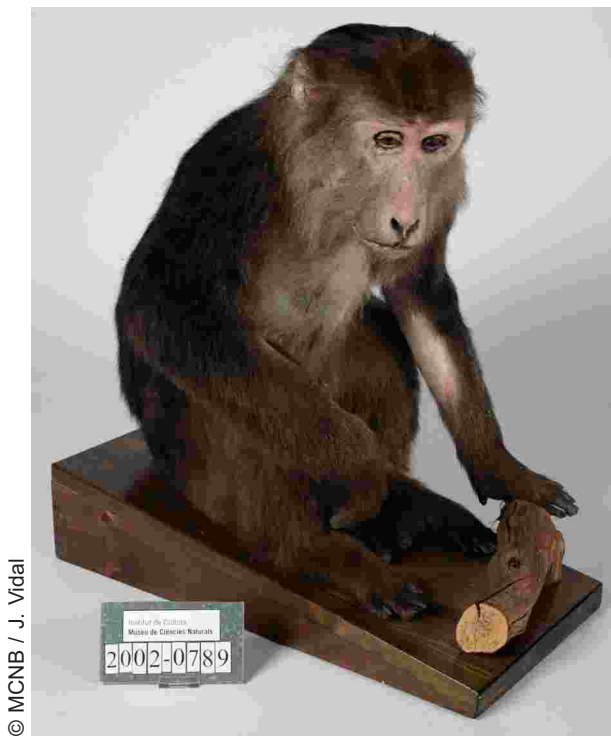


Fig. 7. *Macaca thibetana* received from the Barcelona Zoo.
Fig. 7. *Macaca thibetana* procedente del Zoo de Barcelona.



Fig. 8. *Ptilocolobus pennantii* from Bioko Island.
Fig. 8. *Ptilocolobus pennantii* procedente de la Isla de Bioko.

oedipus (Linnaeus, 1758), *Ptilocolobus pennantii* (Waterhouse, 1838), *Pongo abeli*, Lesson 1827, *Gorilla gorilla* (Savage, 1847).

Conclusion

The scientific value of the collection has increased since the review. A total of 83 taxa are represented in the primatological collection of the Natural Science Museum of Barcelona. Although the individual groups have yet to be studied specifically our work can help support the Museum's educational and scientific commitments. The Primate Collection is, in fact, one of the collections at the MCNB most commonly used by researchers in biology, palaeontology, anthropology and medicine (Gibert et al., 2007; Galbany et al., 2004; Potau et al., 2007).

As stressed by many authors (Capanna, 1996; Bullini 2004; Gippoliti, 2005), modern biological collections play a vital role in biodiversity studies. Historical collections have great importance for understanding present and former diversity at population and species level. Moreover, The materials housed at the NSMB and their fascinating histories connected to zoologists, animal sellers and explorers considerably enhance the history of this wonderful city.

Acknowledgments

We wish to thank Spartaco Gippoliti for his help in the identification of some African specimens. To Anna Díaz Lorca and Carles Orta for their help in the work with the collection, and the photographer Jordi Vidal for his photos. Special thanks too to Anna Omedes for giving us the opportunity to review the primatological collection at the MCNB.

References

- Auricchio, P., 1995. *Primatas do Brasil*. Terra Brasilis Editora Ltda, São Paulo.
- Brandon–Jones, D., Eudey, A. A., Geissmann, T., Groves, C. P., Melnick, D. J., Morales, J. C., Shekelle, M. & Stewart, C. B., 2004. Asian Primate Classification. *Int. J. Primatology*, 25(1): 68–164.
- Bullini, L., 2004. Diversità genetica, specie minacciate e impatto antropico: ciò che le collezioni museali possono dirci. *Atti Convegni Lincei*, 199: 71–79.
- Capanna, E., 1996. I musei naturalistici come archivio di biodiversità. *Museologia Scientifica*, 13 (Suppl.): 25–37.
- Defler, T. R., 2004. Primates of Colombia Conservation International Tropical Field Guide Series. In: *Conservation International* (J. V. Rodríguez–Mahecha, A. B. Rylands & R. A. Mittermeier, Eds.). Bogota.
- Galbany, J., Martínez, L. M., Hiraldo, O., Espurz, V., Estebaranz, F., Sousa, M., Martínez López–Amor, H., Medina, A. M., Farrés, M., Bonnin, A., Bernis, C., Turbón, D. & Pérez–Pérez, A., 2004. *Catálogo de moldes de dientes de homínidos de la Universitat de Barcelona* (A. Pérez–Pérez, Ed.). Universitat de Barcelona, Spain.
- Gibert, J., Gibert, L., Ribot, F., Ferràndez–Canadell, C., Sánchez, F., Iglesias, A. & Walker, M. J., 2007. CV–0, an early Pleistocene human phalanx from Cueva Victoria (Cartagena, Spain). *Journal of Human Evolution*, 54: 150–156.
- Gippoliti, S., 2005. Historical museology meets tropical biodiversity conservation. *Biodiversity and Conservation*, 14: 3127–3134.
- Groves, C. P., 2001. *Primate taxonomy*. Smithsonian Institution Press, Washington DC.
- 2005. Order Primates. In: *Mammal species of the world. A taxonomic and geographic reference* (third edition, vol. 1): 111–184 (D. E. Wilson & D. A. M. Reeder, Eds.). Balti-

- more, The John Hopkins University Press.
- Grubb, P., Butynsky, T. M., Oates, J. F., Bearder, S. K., Disotell, T. R., Groves, C. P. & Struhsaker, T. T., 2003. An assessment of the diversity of African primates. *Int. J. Primatology*, 24: 1301–1357.
- Honacki, J. H., Kinman, K. E. & Koepl, J., Eds., 1982. *Mammal species of the world. A taxonomic and geographic reference*. Association of Systematics Collections, USA.
- IUCN, 2010. *Red list of Threatened Animals*, <http://www.iucnredlist.org>
- Kingdon, J., 2004. *The Kingdon Pocket Guide to African Mammals*. A&C Black, London.
- Mittermeier, R. A., Konstant, W. R., Hawkins, F., Louis, E. E., Langrand, O., Ratsimbazafy, J., Rasoloarison, R., Ganzhorn, J. U., Rajaobelina, S., Tattersall, I. & Meyers, D. M., 2008. Lemurs of Madagascar (II Edition). In: *Conservation International*. International Washington, DC.
- Mootnick, A. R. & Groves, C. P., 2005. A new generic name for the Hoolock gibbon (Hylobatidae). *Int. J. Primatol.*, 26(4): 972–976.
- Potau, J. M., Bardina, X. & Ciurana, N., 2007. Subacromial Space in African Great Apes and Subacromial Impingement Syndrome in Humans. *Int. J. Primatology*, 28: 865–880.
- Rylands, A. B., Schneider H., Langguth, A., Mittermeier R. A., Groves, C. P. & Rodríguez–Luna, E., 2000. An Assessment of the Diversity of New World Primates. *Neotropical Primates*, 8(2): 61–93.
- Rowe, N., 1996. *The Pictorial Guide of Primates*. Pogonias Press, East Hampton, New York.
- Rylands, A. B., Kierulff, M. C. M. & Mittermeier, R., 2005. Notes on the taxonomy and distribution of the tufted capuchin monkeys (*Cebus*, Cebidae) of South America. *Lundiana*, 6 (supplement): 97–110.
- Swindler, D. R., 2002. *Primate dentition. An Introduction to the Teeth of Non–human Primates*. Cambridge, Univ. Press.
- Thalman, U. & Geissman, T., 2005. New species of woolly lemur *Avahi* (Primates: Lemuriformes) in Bemaraha (Central Western Madagascar). *Am. J. Primatol.*, 67: 371–376.
- Walker, S. & Molur, S., 2007. *Guide to the South Asian Primates for Teachers and Student of All Ages: 1–64* (S. Walker & S. Molur, Eds.). Coimbatore, India.
- Wilson, D. E. & Reeder, D. A. M. (Eds.) 2005. *Mammal species of the world. A taxonomic and geographic reference.*, Third edition, vol. 1. The John Hopkins Univ. Press, Baltimore.

Annex 1. List of the taxa in primate collection with detail of sample type, sex and age, when available. Also with information of collection (place and date) and with acquisition form: PD. Previous determination; S. Sex; A. Age (Juv. Juvenil; Sa. Subadult; Ad. Adult; Inf. Infant); CP. Collection place; CD. Collection date; Ac. Acquisition (U. Unknown; De. Deposit; Do. Donation; P. Purchase; C. Recollection); SAc. Source of acquisition; AcD. Acquisition date.

Anexo 1. Lista de los taxones representados en la colección de primates con detalle sobre el tipo de muestra, sexo y edad cuando está disponible. Con información también de la recolección (lugar y fecha) y sobre la adquisición de los ejemplares: PD. Determinación previa; S. Sexo; A. Edad (Juv. Juvenil; Sa. Subadulto; Ad. Adulto; Inf. Infantil); CP. Lugar de recolección; CD. Fecha de recolección; Ac. Adquisición (U. Desconocido; De. Depósito; Do. Donación; P. Compra; C. Recolección); SAc. Fuente de adquisición; AcD. Fecha de adquisición.

Family	Number	Taxon	PD	Sample	S	A	CP	CD	Ac	SAc	AcD
	MZB 82 7095	Primates	Primates	Postcranial skeleton					U	Unknown	
	MZB 83 0175	Primates	Primates	Bones					U	Unknown	
Infraorder Lemuriformes											
Family Lemuridae											
	MZB 82 7447	<i>Eulemur sanfordi</i> <i>vel albifrons</i>	Lemuridae	Stuffed	F	Sad			U	Unknown	
	MZB 94 0153	<i>Eulemur fulvus</i> <i>mayottensis</i>	<i>Lemur fulvus</i> <i>mayottensis</i>	Skin	F	Ad		09 III 1980	Do	Barcelona Zoo	27 I 1994
	MZB 94 0388	<i>Eulemur fulvus</i> <i>mayottensis</i>	<i>Lemur fulvus</i>	Appendicular skeleton	Ad			1979	Do	Barcelona Zoo	18 IV 1994
	MZB 94 1037	<i>Eulemur fulvus</i> <i>mayottensis</i>	<i>Eulemur fulvus</i> <i>mayottensis</i>	Skeleton	F	Sa		09 III 1980	Do	Barcelona Zoo	18 IV 1994
	MZB 94 1379	<i>Eulemur fulvus</i> <i>mayottensis</i>	<i>Lemur fulvus</i> <i>mayottensis</i>	Skeleton	M	Ad			Do	Barcelona Zoo	29 IX 1994

Annex 1 (Cont.)

Family

Number	Taxon	PD	Sample	S	A	CP	CD	Ac	SAc	AcD
MZB 97 0046	<i>Eulemur macaco</i>	<i>Lemur macaco macaco</i>	Skeleton	M	Ad		30 I 1997	Do	Barcelona Zoo	05 II 1997
MZB 82 0536	<i>Eulemur rufus</i>	<i>Lemur mongoz</i>	Stuffed	M	Ad			U	Unknown	
MZB 82 7601	<i>Lemur catta</i>	<i>Lemur catta</i>	Stuffed	F	Ad	Madagascar		P	Antiga College	30 IV 1888
MZB 93 0075	<i>Lemur catta</i>	<i>Lemur catta</i>	Skeleton		Ad			Do	Barcelona Zoo	28 IX 1993
MZB 94 0116	<i>Lemur catta</i>	<i>Lemur catta</i>	Skin	M	Ad			Do	Barcelona Zoo	27 I 1994
MZB 82 7609	<i>Varecia variegata</i>	<i>Lemur variegata</i>	Stuffed		Ad	Madagascar		U	Unknown	
MZB 82 7610	<i>Varecia variegata</i>	<i>Lemur variegata</i>	Stuffed		Ad	Madagascar		U	Unknown	

Family Indridae

MZB 82 7592	<i>Avahi</i> cfr. <i>cleesei</i>	<i>Lichanotus laniger</i>	Stuffed	M	Ad	Madagascar		P	Casa Darder	31 I 1883
MZB 82 0537	<i>Indri indri</i>	<i>Indri Indri</i>	Stuffed	F	Ad	Madagascar		P	Antiga College	30 IV 1888
MZB 82 7662	<i>Propithecus diadema</i>	<i>Propithecus diadema</i>	Stuffed		Ad	Madagascar		U	Jaume Balmes Institut	
MZB 82 7765	<i>Propithecus diadema</i>	<i>Propithecus diadema</i>	Stuffed					U	Jaume Balmes Institut	

Infraorder Lorisiformes

Family Lorisidae

MZB 82 0540	<i>Loris tardigradus tardigradus</i>	<i>Loris tardigradus</i>	Stuffed	M	Ad	Sry Lanka (Colombo)	0 V 1929	C	Collectors	20 XII 1929
-------------	--------------------------------------	--------------------------	---------	---	----	---------------------	----------	---	------------	-------------

Annex 1 (Cont.)

Family

Number	Taxon	PD	Sample	S	A	CP	CD	Ac	SAc	AcD
MZB 82 0541	<i>Loris tardigradus tardigradus</i>	<i>Loris tardigradus</i>	Stuffed	F	Ad	Sry Lanka (Colombo)	0 V 1929	C	Collectors	20 XII 1929
MZB 82 0538	<i>Nycticebus</i> sp.	<i>Nycticebus coucang</i>	Stuffed	F	Ad	Indonesia		P	Antiga College	30 IV 1888
MZB 82 0539	<i>Perodicticus potto</i>	<i>Perodicticus potto</i>	Stuffed	F	Ad			U	Unknown	
MZB 82 6895	<i>Perodicticus potto</i>	<i>Perodicticus potto</i>	Skull			Equatorial Guinea		C	Collectors	
MZB 99 1333	<i>Perodicticus potto</i>	<i>Perodicticus potto</i>	Stuffed	F	Ad			Do	Casp College	13 IX 1999

Galagidae

MZB 82 7414	<i>Galago alleni</i>	<i>Galago alleni (otolicnus)</i>	Skin		Ad	Equatorial Guinea	1921	C	Collectors	1921
MZB 82 0235	<i>Galago (galagooides) demidoff</i>	<i>Hemigalago demidoffi</i>	Skin & skull		Ad	Camerun		P	Rowland Ward	
MZB 82 6896	<i>Galago (galagooides) demidoff</i>	<i>Hemigalago demidoffi</i>	Skin & skull		Ad	Camerun		P	Rowland Ward	
MZB 82 6897	<i>Galago (galagooides) demidoff</i>	<i>Hemigalago demidoffi</i>	Skull		Juv	Camerun		P	Rowland Ward	1919

Annex 1 (Cont.)

Family

Number	Taxon	PD	Sample	S	A	CP	CD	Ac	SAc	AcD
MZB 82 7404	<i>Galago (galagooides) demidoff</i>	<i>Hemigalago demidoffi</i>	Skin & skull	M	Ad	Camerun		P	Rowland Ward	
MZB 82 7408	<i>Galago (galagooides) demidoff</i>	<i>Hemigalago demidoffi</i>	Skin & skull	M	Ad	Camerun		P	Rowland Ward	
MZB 82 7411	<i>Galago (galagooides) demidoff</i>	<i>Hemigalago demidoffi</i>	Skin & skull	F	Ad	Camerun		P	Rowland Ward	
MZB 82 7413	<i>Galago (galagooides) demidoff</i>	Primate	Skin		Juv			U	Unknown	
MZB 94 0470	<i>Otolemur</i> sp.	<i>Hemigalago demidoffi</i>	Skeleton					Do	Barcelona Zoo	18 IV 1994
MZB 82 7090	<i>Otolemur</i> sp.	<i>Perodicticus potto</i>	Skeleton		Ad		1977	U	Barcelona Zoo	

Infraorder Simiformes – Parvorder Platyrrhini

Family Callitrichidae

MZB 97 0047	<i>Callithrix</i> cfr. <i>geoffroyi</i>	<i>Callithrix j. geoffroyi</i>	Skeleton	F	Sad		09 I 1997	Do	Barcelona Zoo	05 II 1997
MZB 94 1421	<i>Callithrix</i> cfr. <i>penicillata</i>	<i>Callithrix j. penicillata</i>	Skeleton & other	M	Ad			Do	Barcelona Zoo	26 IV 1994
MZB 82 7435	<i>Callithrix jacchus</i>	<i>Callithrix</i>	Stuffed	M	Ad			U	Unknown	

Annex 1 (Cont.)

Family

Number	Taxon	PD	Sample	S	A	CP	CD	Ac	SAc	AcD
MZB 92 0005	<i>Callithrix jacchus</i>	<i>Callithrix penicillata</i>	Skeleton & skin	F	Ad		1991	Do	Barcelona Zoo	31 I 1992
MZB 92 0486	<i>Callithrix jacchus</i>	<i>Callithrix jacchus</i>	Whole animal alcohol		Inf			Do	Barcelona Zoo	0 0 1992
MZB 95 0838	<i>Callithrix jacchus</i>	<i>Callithrix jacchus</i>	Whole animal alcohol		Inf		17 VII 1995	Do	Barcelona Zoo	06 IX 1995
MZB 99 1430	<i>Callithrix jacchus</i>	<i>Callithrix jacchus</i>	Stuffed	F	Ad	Brazil		Do	Casp College	13 IX 1999
MZB2001 0717	<i>Callithrix jacchus</i>	<i>Callithrix jacchus</i>	Stuffed		Ad			Do	Salesians of Sarrià	11 VII 2001
MZB2002 1047	<i>Callithrix</i>	<i>Callithrix jacchus</i>	Stuffed		Ad			Do	Ana Maria Garcia Alemany	19 XI 2002
MZB 82 0534	<i>Callithrix penicillata</i>	<i>Callithrix jacchus</i>	Stuffed		Juv	Brazil		P	Casa Unlauff	
MZB 82 7437	<i>Callithrix penicillata</i>	<i>Callithrix penicillata</i>	Stuffed	F	Ad			U	Unknown	
MZB 99 1431	<i>Callithrix penicillata</i>	<i>Callithrix</i>	Stuffed	M	Ad			Do	Casp College	13 IX 1999
MZB 82 7585	<i>Mico argentatus</i>	Primates	Stuffed	M	Ad	South America		U	Unknown	
MZB 93 0235	<i>Mico argentatus</i>	<i>Callithrix argentata</i>	Skeleton		Sad			Do	Barcelona Zoo	08 VI 1993
MZB 95 0407	<i>Mico argentatus</i>	<i>Callithrix argentata</i>	Skeleton		Ad			Do	Barcelona Zoo	02 IV 1993

Annex 1 (Cont.)

Family

Number	Taxon	PD	Sample	S	A	CP	CD	Ac	SAc	AcD
MZB 82 0338	<i>Cebuella pygmaea</i>	<i>Cebuella pygmaea</i>	Skin	M	Ad	Ecuador (Santa Rosa De Sucumbio)	29 VIII 1931	P	Leopoldo Gómez Alonso	
MZB 82 7394	<i>Cebuella pygmaea</i>	<i>Cebuella pygmaea</i>	Skin	M	Ad	Ecuador (Santa Rosa De Sucumbio)	04 IV 1931	P	Leopoldo Gómez Alonso	
MZB 84 9519	<i>Cebuella pygmaea</i>	<i>Cebuella pygmaea</i>	Skull	M	Ad	Ecuador (Santa Rosa de Sucumbio)	04 IV 1931	P	Leopoldo Gómez Alonso	
MZB 94 1165	<i>Cebuella pygmaea</i>	<i>Cebuella pygmaea</i>	Skull	M	Juv			Do	Barcelona Zoo	10 XI 1993
MZB 97 0044	<i>Leontopithecus chrysomelas</i>	<i>Leontopithecus r. chrysomelas</i>	Skeleton	M	Ad		14 I 1997	Do	Barcelona Zoo	05 I 1997
MZB 97 0045	<i>Leontopithecus chrysomelas</i>	<i>Leontopithecus r. chrysomelas</i>	Skeleton	F	Ad		13 I 1997	Do	Barcelona Zoo	05 II 1997
MZB 93 0034	<i>Leontopithecus rosalia</i>	<i>Leontopithecus rosalia</i>	Skeleton		Ad			Do	Barcelona Zoo	02 IV 1993
MZB 93 0035	<i>Leontopithecus rosalia</i>	<i>Leontopithecus rosalia</i>	Skeleton		Ad			Do	Barcelona Zoo	02 IV 1993
MZB 96 0532	<i>Leontopithecus rosalia</i>	<i>Leontopithecus rosalia</i>	Skeleton	M	Ad		07 IV 1996	Do	Barcelona Zoo	08 V 1996
MZB2003 1566	<i>Saguinus fuscicollis</i> vel <i>nigricollis</i>	<i>Saimiri sciureus</i>	Skull	M	Ad	Colombia (La Chorrera)	0 XI 1979	Do	Capuchins of Catalunya	23 VII 2003

Annex 1 (Cont.)

Family

Number	Taxon	PD	Sample	S	A	CP	CD	Ac	SAc	AcD
MZB 84 9517 / MZB 82 7409	<i>Saguinus fuscicollis lagomotus</i>	<i>Saguinus fuscicollis ollala</i>	Skin & skull	F	Ad	Ecuador	08 I 1934	C	Collectors	
MZB 84 9530 / MZB 82 7401	<i>Saguinus fuscicollis lagomotus</i>	<i>Saguinus fuscicollis</i>	Skin & skull	F	Juv			U	Unknown	
MZB 84 9518 / MZB 82 7406	<i>Saguinus graellsii</i>	<i>Saguinus</i>	Skin & skull	F	Ad	Ecuador (Santa Rosa de Sucumbio)	29 X 1931	P	Collectors	
MZB 93 0329	<i>Saguinus melanoleucus</i>	Primates	Stuffed		Juv			U	Unknown	
MZB 82 7439	<i>Saguinus midas</i>	<i>Cercopithecus rufimanus</i>	Stuffed	F	Ad	Brazil		U	Unknown	
MZB 2003 0496	<i>Saguinus midas</i>	<i>Saguinus midas midas</i>	Skeleton	M	Ad		05 III 2003	Do	Barcelona Zoo	13 III 2003
MZB 2003 1909	<i>Saguinus nigricollis nigricollis</i>	Callithrichidae	Stuffed		Juv	Colombia (La Chorrera)		Do	Capuchins of Catalunya	23 VIII 2003
MZB 82 7427	<i>Saguinus oedipus</i>	Primates	Stuffed	M	Ad			U	Unknown	
MZB 99 1432	<i>Saguinus oedipus</i>	<i>Saguinus oedipus</i>	Stuffed	M	Ad	Colombia		Do	Casp College	13 IX 1999
MZB 84 9520 / MZB 82 7407	<i>Saguinus tripartitus</i>	<i>Leontocebus apiculatus</i>	Skin & skull	F	Ad	Ecuador (Aguarico)	00 I 1935	P	Leopoldo Gómez Alonso	

Annex 1 (Cont.)

Family

Number	Taxon	PD	Sample	S	A	CP	CD	Ac	SAc	AcD
Family Cebidae										
MZB 82 6894	<i>Cebus</i> sp.	<i>Cebus</i>	Mandibule					De	R.A.C.A.	22 X 1926
MZB 83 0147	<i>Cebus</i> sp.	Primates	Mandibule		Juv			U	Unknown	
MZB 93 0390	<i>Cebus</i> sp.	Primates	Mandibule		Juv			U	Unknown	
MZB 94 0677	<i>Cebus</i> sp.	Primates	Skeleton		Ad			Do	Barcelona Zoo	0 0 1994
MZB2003 1564	<i>Cebus apella</i> vel <i>albifrons</i>	<i>Cebus</i>	Skull			Colombia (La Chorrera)	0 XI 1979	Do	Capuchins of Catalunya	23 VII 2003
MZB2003 1565	<i>Cebus apella</i> vel <i>albifrons</i>	<i>Cebus</i>	Skull			Colombia (La Chorrera)	0 XI 1979	Do	Capuchins of Catalunya	23 VII 2003
MZB 82 7332	<i>Cebus albifrons</i>	<i>Cebus</i>	Skin	M	Ad	Ecuador (Oriente)	0 V 1932	P	Leopoldo Gómez Alonso	
MZB 82 7589	<i>Cebus albifrons</i>	<i>Cebus</i>	Stuffed	M	Juv			U	Unknown	
MZB 82 7612	<i>Cebus albifrons</i>	<i>Cebus apella</i>	Stuffed	M	Sad			U	Unknown	
MZB 94 0365	<i>Cebus albifrons</i>	<i>Cebus albifrons</i>	Skeleton	F	Ad			Do	Barcelona Zoo	18 IV 1994
MZB 82 7606	<i>Cebus apella</i>	<i>Cebus apella</i>	Stuffed	M	Ad			U	Unknown	
MZB 82 7651	<i>Cebus apella</i>	<i>Cebus apella</i>	Stuffed	M	Sad	America		U	Barcelona Zoo	
MZB 94 0362	<i>Cebus apella</i>	<i>Cebus apella</i>	Skeleton	M	Sad			Do	Barcelona Zoo	18 IV 1994
MZB 94 0148	<i>Cebus capuchinus</i>	<i>Cebus capuchinus</i>	Skin		Juv			Do	Barcelona Zoo	27 I 1994
MZB 94 0478	<i>Cebus capuchinus</i>	<i>Cebus capuchinus</i>	Postcranial skeleton		Juv			Do	Barcelona Zoo	18 IV 1994

Annex 1 (Cont.)

Family

Number	Taxon	PD	Sample	S	A	CP	CD	Ac	SAc	AcD
MZB 94 0648	<i>Cebus capuchinus</i>	<i>Cebus capuchinus</i>	Postcranial skeleton		Ad		17 I 1980	Do	Barcelona Zoo	18 IV 1994
MZB 82 0527	<i>Cebus olivaceus</i>	<i>Cebus olivaceus</i>	Stuffed	M	Juv	Brazil		Do	Miguel Vidal Parés	0 VIII 1909
MZB 94 0375	<i>Saimiri sciureus</i>	<i>Saimiri sciureus</i>	Bones					Do	Barcelona Zoo	18 IV 1994
MZB 95 0382	<i>Saimiri sciureus</i>	<i>Saimiri sciureus boliviensis</i>	Skeleton	M	Ad		22 VII 1995	Do	Barcelona Zoo	28 VII 1995
MZB20040052	<i>Saimiri sciureus</i>	<i>Saimiri sciureus</i>	Skeleton	M	Ad		02 I 2004	Do	Barcelona Zoo	19 I 2004
MZB20031727	<i>Saimiri sciureus macrodon</i>	<i>Saimiri oerstedii</i>	Skin		Ad	Colombia (Sibundoy)		Do	Capuchins of Catalunya	23 VII 2003
MZB 82 0532	<i>Saimiri sciureus sciureus</i>	<i>Saimiri sciureus</i>	Stuffed	M		Suriname		P	Casa Schlüter & Mass	

Family Pitheciidae

MZB 82 0533	<i>Cacajao calvus rubicundus</i>	<i>Cacajao rubicundus</i>	Stuffed	F	Juv			U	Unknown	
MZB 82 0530	<i>Pithecia monachus</i>	<i>Chiropotes satanas</i>	Stuffed	F	Juv			U	Unknown	
MZB20031728	<i>Pithecia monachus milleri</i>	Primates	Skin		Ad	Colombia (Sibundoy)		Do	Capuchins of Catalunya	23 VII 2003
MZB20030495	<i>Pithecia pithecia</i>	<i>Pithecia pithecia</i>	Skeleton	M	Ad		05 III 2003	Do	Barcelona Zoo	13 III 2003
MZB20040678	<i>Pithecia pithecia</i>	<i>Pithecia pithecia</i>	Skeleton & other	F	Ad		07 V 2004	Do	Barcelona Zoo	24 V 2004

Annex 1 (Cont.)

Family

Number	Taxon	PD	Sample	S	A	CP	CD	Ac	SAc	AcD
MZB 2006 0321	<i>Pithecia pithecia</i>	<i>Pithecia pithecia</i>	Skeleton & stuffed	M	Ad		24 XII 2004	Do	Barcelona Zoo	29 VI 2006
Family Atelidae										
MZB 82 7157	<i>Alouatta</i> sp.	Primates	Mandibule		Ad			U	Unknown	
MZB 94 0479	<i>Alouatta palliata</i>	<i>Alouatta palliata</i>	Postcranial skeleton		Juv			Do	Barcelona Zoo	18 IV 1994
MZB 82 0531	<i>Alouatta seniculus</i>	<i>Alouatta seniculus</i>	Stuffed	F	Ad	Brazil		P	Casa Darder	22 II 1890
MZB 2003 1550	<i>Alouatta seniculus</i>	<i>Alouatta</i>	Skull		Juv	Colombia (Sibundoy)		Do	Capuchins of Catalunya	23 VII 2003
MZB 2003 1551	<i>Alouatta seniculus</i>	<i>Alouatta</i>	Skull	M	Ad	Colombia (Sibundoy)	0 XI 1979	Do	Capuchins of Catalunya	23 VII 2003
MZB 2003 1552	<i>Alouatta seniculus</i>	<i>Alouatta</i>	Mandibule		Ad	Colombia	0 XI 1979	Do	Capuchins of Catalunya	23 VII 2003
MZB 2003 1562	<i>Alouatta seniculus</i>	Primates	Skull	F	Ad	Colombia (La Chorrera)	0 XI 1979	Do	Capuchins of Catalunya	23 VII 2003
MZB 2003 1924	<i>Alouatta seniculus</i>	<i>Alouatta seniculus</i>	Stuffed	F	Ad	Colombia		Do	Capuchins of Catalunya	23 VII 2003
MZB 91 0234	<i>Ateles hybridus</i>	<i>Ateles paniscus</i>	Skeleton		Inf			Do	Barcelona Zoo	06 VIII 1991
MZB 94 0643	<i>Ateles hybridus</i>	<i>Ateles ater paniscus</i>	Postcranial skeleton		M	Juv	02 III 1981	Do	Barcelona Zoo	18 IV 1994
MZB 94 1040	<i>Ateles hybridus</i>	<i>Ateles ater paniscus</i>	Skeleton		M	Ad	07 III 1980	Do	Barcelona Zoo	18 IV 1994

Annex 1 (Cont.)

Family

Number	Taxon	PD	Sample	S	A	CP	CD	Ac	SAC	AcD
MZB 2001 0467	<i>Ateles hybridus</i>	<i>Ateles belzebuth hybridus</i>	Skin		M	Ad	0 0 1975	Do	Barcelona Zoo	10 IV 2001
MZB 82 7473	<i>Ateles</i> cfr. <i>geoffroy</i>	<i>Ateles</i>	Stuffed		Juv			U	Unknown	
MZB 94 0166	<i>Ateles</i> cfr. <i>geoffroy</i>	<i>Ateles ater</i>	Skin	M	Inf		02 III 1981	Do	Barcelona Zoo	27 I 1994
MZB 82 0535	<i>Ateles fusciceps</i> vel <i>geoffroy</i>	<i>Ateles paniscus</i>	Stuffed	F	Ad	French Guiana (Cayenne)		Do	Collectors	21 II 1891
MZB 94 0429	<i>Lagothrix</i> sp.	<i>Lagothrix lagotricha</i>	Appendicular skeleton	M	Ad		0 IX 1980	Do	Barcelona Zoo	18 IV 1994
MZB2003 1729	<i>Lagothrix lagotricha</i> vel <i>lugens</i>	<i>Lagothrix</i>	Skin		Ad	Colombia (Sibundoy)		Do	Capuchins Of Catalunya	23 VII 2003
MZB 82 7660	<i>Lagothrix cana</i>	<i>Lagothrix lagotricha</i>	Stuffed	M	Ad	Perú		P	Casa Darder	22 II 1890
MZB2003 1563	<i>Lagothrix lagotricha</i>	Primates	Skull	F	Ad	Colombia (La Chorrera)	0 XI 1979	Do	Capuchins of Catalunya	23 VII 2003

Infraorder Simiformes – Parvorder Catarrhini

Family Cercopithecidae

MZB 82 7093	Cercopithecidae	<i>Cercopithecus torquatus</i>	Skeleton		Subad			U	Unknown	
-------------	-----------------	--------------------------------	----------	--	-------	--	--	---	---------	--

Annex 1 (Cont.)

Family

Number	Taxon	PD	Sample	S	A	CP	CD	Ac	SAc	AcD
MZB 95 0837	Cercopithecidae	<i>Pithecia pithecia</i>	Skeleton	F	Ad		16 VIII 1995	Do	Barcelona Zoo	06 IX 1995
MZB 83 0164	<i>Cercocebus</i> vel <i>lophocebus</i>	Cercopithecidae	Skull		Juv			U	Unknown	
MZB 82 0551	<i>Cercocebus</i> sp.	<i>Cercocebus torquatus</i>	Whole animal alcohol		Foetus			U	Unknown	
MZB 91 0235	<i>Cercocebus</i> sp.	<i>Papio hamadryas</i>	Skeleton	M	Ad		1991	C	Barcelona Zoo	06 VIII 1991
MZB 93 0301	<i>Cercocebus</i> sp.	<i>Papio hamadryas</i>	Skeleton	M	Ad			U	Unknown	
MZB 82 7604	<i>Cercocebus</i> cfr. <i>agilis</i>	<i>Cercocebus</i>	Stuffed		Juv			U	Unknown	
MZB 82 7605	<i>Cercocebus</i> cfr. <i>agilis</i>	<i>Cercocebus</i>	Stuffed		Sad			U	Unknown	
MZB 82 7650	<i>Cercocebus</i> cfr. <i>agilis</i>	Cercopithecidae	Stuffed		Ad			U	Unknown	
MZB 82 0552	<i>Cercocebus torquatus</i>	<i>Cercocebus torquatus</i>	Skull	M	Sad	Gabon		U	Barcelona Zoo (probably)	
MZB 82 0554	<i>Cercocebus torquatus</i>	<i>Colobus abyssinicus</i>	Stuffed	F	Ad	Ethiopi		U	Casa Soler	26 II 1909
MZB 82 7144	<i>Cercocebus torquatus</i>	<i>Papio</i>	Skull	F	Ad			U	Unknown	

Annex 1 (Cont.)

Family

Number	Taxon	PD	Sample	S	A	CP	CD	Ac	SAC	AcD
MZB 82 7724	<i>Cercocebus torquatus</i>	<i>Cercocebus torquatus</i>	Stuffed	M	Ad			U	Unknown	
MZB 94 0059	<i>Cercocebus torquatus</i>	<i>Cercocebus torquatus</i>	Skin	F	Ad		26 I 1981	Do	Barcelona Zoo	27 I 1994
MZB 94 1363	<i>Cercocebus torquatus</i>	<i>Cercocebus torquatus</i>	Skeleton	M	Juv		12 XI 1980	Do	Barcelona Zoo	18 IV 1994
MZB 2000 0286	<i>Cercocebus torquatus</i>	<i>Cercocebus torquatus</i>	Skeleton	M	Ad			Do	Barcelona Zoo	29 III 2000
MZB 82 7017	<i>Cercopithecus</i> sp.	Primates	Skull & other		Inf			U	Unknown	
MZB 82 7050	<i>Cercopithecus</i> sp.	Primates	Skeleton		Sad			U	Unknown	
MZB 91 0315	<i>Cercopithecus</i> sp.	<i>Cercopithecus torquatus</i>	Skeleton					Do	Barcelona Zoo	06 VIII 1991
MZB 93 0358	<i>Cercopithecus</i> sp.	Cebidae	Skeleton	M	Ad			U	Barcelona Zoo	
MZB 82 7148	<i>Cercopithecus</i> cfr. <i>nictitans</i>	Primates	Skull	M	Ad			U	Unknown	
MZB 94 1039	<i>Cercopithecus ascanius</i>	<i>Cercopithecus ascanius</i>	Postcranial skeleton	M	Sad		1976	Do	Barcelona Zoo	18 IV 1994
MZB 82 7590	<i>Cercopithecus cephus</i>	<i>Cercopithecus cephus</i>	Stuffed		Juv			U	Unknown	
MZB 82 7657	<i>Cercopithecus cephus</i>	<i>Cercopithecus cephus</i>	Stuffed		Ad			U	Unknown	

Annex 1 (Cont.)

Family

Number	Taxon	PD	Sample	S	A	CP	CD	Ac	SAC	AcD
MZB 93 0389	<i>Cercopithecus cephus</i>	Primates	Stuffed	F	Juv			U	Unknown	
MZB 94 0722	<i>Cercopithecus cephus</i>	<i>Cercopithecus cephus</i>	Mandibule		Sad			Do	Barcelona Zoo	18 IV 1994
MZB 82 7622	<i>Cercopithecus diana</i>	<i>Cercopithecus diana</i>	Stuffed	M	Ad			U	Unknown	
MZB 94 0168	<i>Cercopithecus diana</i>	<i>Cercopithecus diana</i>	Skin	M	Ad		1979	Do	Barcelona Zoo	27 I 1994
MZB 94 0169	<i>Cercopithecus erythrotis</i>	<i>Cercopithecus erythrotis</i>	Other		Ad			Do	Barcelona Zoo	27 I 1994
MZB 82 0549	<i>Cercopithecus erythrotis</i>	<i>Cercopithecus erythrotis</i>	Stuffed		Juv			U	Unknown	
MZB 82 7475	<i>Cercopithecus erythrotis</i>	<i>Cercopithecus erythrotis</i>	Stuffed		Juv	Equatorial Guinea		U	Unknown	
MZB 82 7151	<i>Cercopithecus lhoesti</i>	<i>Cercopithecus</i>	Skull	M	Ad		1976	U	Barcelona Zoo	
MZB 94 0361	<i>Cercopithecus nictitans</i>	<i>Cercopithecus nictitans</i>	Postcranial skeleton	F	Sad		0 0 1989	Do	Barcelona Zoo	18 IV 1994
MZB20040193	<i>Cercopithecus nictitans martini</i>	<i>Cercopithecus nictitans</i>	Skeleton	M	Ad		09 II 2004	Do	Barcelona Zoo	23 II 2004
MZB 82 7614	<i>Cercopithecus petaurista</i>	<i>Cercopithecus albogularis</i>	Stuffed	F	Juv	Àfrica		C	Collectors	11 II 1898

Annex 1 (Cont.)

Family

Number	Taxon	PD	Sample	S	A	CP	CD	Ac	SAc	AcD
MZB 82 7616	<i>Cercopithecus petaurista buettikoferi</i>	<i>Cercopithecus ascanius</i>	Stuffed	M	Ad			U	Unknown	
MZB 94 0014	<i>Cercopithecus petaurista buettikoferi</i>	<i>Cercopithecus ascanius</i>	Skin	M	Sad		1979	Do	Barcelona Zoo	27 I 1994
MZB 94 0165	<i>Cercopithecus petaurista petaurista</i>	<i>Cercopithecus petaurista</i>	Skin	M	Ad		15 XII 1980	Do	Barcelona Zoo	27 I 1994
MZB 94 1169	<i>Cercopithecus diana vel roloway</i>	<i>Cercopithecus diana roloway</i>	Postcranial skeleton		Juv			Do	Barcelona Zoo	10 XI 1993
MZB 82 0550	<i>Chlorocebus</i> sp.	<i>Cercopithecus aethiops</i>	Mounted skeleton		Sad			U	Unknown	
MZB 82 7145	<i>Chlorocebus</i> sp.	<i>Macaca</i> sp.	Skull	M	Ad			U	Unknown	
MZB 82 7596	<i>Chlorocebus</i> cfr. <i>aethiops</i>	<i>Cercopithecus aethiops</i>	Stuffed	M	Ad			U	Unknown	
MZB 82 7603	<i>Chlorocebus sabaeus</i>	<i>Cercopithecus aethiops</i>	Stuffed	F	Ad			U	Unknown	
MZB 82 7611	<i>Chlorocebus sabaeus</i>	<i>Cercopithecus aethiops</i>	Stuffed	F	Juv			U	Unknown	
MZB 82 7613	<i>Chlorocebus sabaeus</i>	<i>Cercopithecus aethiops</i>	Stuffed	M	Ad			U	Unknown	
MZB 94 0045	<i>Chlorocebus tantalus</i>	<i>Cercopithecus aethiops</i>	Skin	M	Ad		1980	Do	Barcelona Zoo	27 I 1994

Annex 1 (Cont.)

Family

Number	Taxon	PD	Sample	S	A	CP	CD	Ac	SAC	AcD
MZB 94 1171	<i>Chlorocebus tantalus</i>	<i>Cercopithecus aethiops</i>	Postcranial skeleton	M	Ad		26 II 1980	Do	Barcelona Zoo	10 XI 1993
MZB 82 7661	<i>Erythrocebus patas</i>	<i>Erythrocebus patas</i>	Stuffed	M	Ad			U	Unknown	
MZB 82 7723	<i>Erythrocebus patas</i>	<i>Erythrocebus patas</i>	Stuffed					U	Unknown	
MZB 91 0236	<i>Erythrocebus patas</i>	<i>Erythrocebus patas</i>	Skeleton	F	Ad		1991	C	Barcelona Zoo	06 VIII 1991
MZB 94 0046	<i>Erythrocebus patas</i>	<i>Cercopithecus a. tantalus</i>	Skin	M	Ad			Do	Barcelona Zoo	27 I 1994
MZB 94 0117	<i>Erythrocebus patas</i>	<i>Erythrocebus patas</i>	Skin	M	Ad		28 II 1980	Do	Barcelona Zoo	27 I 1994
MZB 94 1060	<i>Erythrocebus patas</i>	<i>Erythrocebus patas</i>	Bones	F	Juv		0 III 1980	Do	Barcelona Zoo	18 IV 1994
MZB 94 1175	<i>Erythrocebus patas</i>	<i>Erythrocebus patas</i>	Postcranial skeleton	F	Juv		23 III 1980	Do	Barcelona Zoo	10 XI 1993
MZB 94 1177	<i>Erythrocebus patas</i>	<i>Erythrocebus patas</i>	Skeleton	M	Ad			Do	Barcelona Zoo	
MZB 94 1381	<i>Erythrocebus patas</i>	<i>Erythrocebus patas</i>	Skeleton	M	Juv			Do	Barcelona Zoo	
MZB 99 1441	<i>Erythrocebus patas</i>	<i>Cercopithecus</i>	Stuffed	F	Juv			Do	Casp College	13 IX 1999
MZB 82 0528	<i>Macaca</i> sp.	<i>Cebus</i>	Mounted skeleton		Juv	South America		Do	Luis Soler Pujol	02 IV 1907

Annex 1 (Cont.)

Family

Number	Taxon	PD	Sample	S	A	CP	CD	Ac	SAc	AcD
MZB 82 0529	<i>Macaca</i> sp.	<i>Cebus</i>	Mounted skeleton		Inf	South America		Do	Lluís Soler Pujol	02 IV 1907
MZB 82 0558	<i>Macaca</i> sp.	<i>Macaca</i>	Mounted skeleton	M	Sad			U	Unknown	
MZB 82 7143	<i>Macaca</i> sp.	<i>Papio</i>	Skull					U	Unknown	
MZB 82 7147	<i>Macaca</i> sp.	Primates	Skull					U	Unknown	
MZB 82 7149	<i>Macaca</i> sp.	<i>Papio</i>	Skull	M	Ad			U	Unknown	
MZB 82 7155	<i>Macaca</i> sp.	<i>Papio</i>	Skull		Juv			U	Unknown	
MZB 82 7156	<i>Macaca</i> sp.	Primates	Skull	M	Ad			U	Unknown	
MZB 90 0113	<i>Macaca</i> sp.	Primates	Skull		Juv			U	Unknown	
MZB 82 7438	<i>Macaca fascicularis</i>	<i>Macacus carbonarius</i>	Stuffed	F	Inf	Àfrica		Do	Collectors	
MZB 82 7571	<i>Macaca fascicularis</i>	<i>Macaca</i>	Stuffed	M	Sad			U	Unknown	
MZB 82 7608	<i>Macaca fascicularis</i>	Cercopithecidae	Stuffed	M	Ad			U	Unknown	
MZB 82 7619	<i>Macaca fascicularis</i>	Cercopithecidae	Stuffed	M	Ad			U	Unknown	
MZB 82 7621	<i>Macaca fascicularis</i>	<i>Cebus</i>	Stuffed	F	Sad			U	Unknown	
MZB 94 1038	<i>Macaca fascicularis</i>	<i>Macaca fascicularis</i>	Postcranial skeleton	M	Juv		09 VI 1980	Do	Barcelona Zoo	18 IV 1994

Annex 1 (Cont.)

Family

Number	Taxon	PD	Sample	S	A	CP	CD	Ac	SAc	AcD
MZB 97 0313	<i>Macaca fascicularis</i>	Cercopithecidae	Stuffed	M	Ad			Do	Juan Gómez	30 IV 1997
MZB 99 1434	<i>Macaca fascicularis</i>	Cercopithecidae	Stuffed	M	Juv			Do	Casp College	13 IX 1999
MZB 99 1435	<i>Macaca fascicularis</i>	Cercopithecidae	Stuffed		Juv			Do	Casp College	13 IX 1999
MZB 99 1437	<i>Macaca fascicularis</i>	Cercopithecidae	Stuffed	F	Ad			Do	Casp College	13 IX 1999
MZB 99 1442	<i>Macaca fascicularis</i>	Cercopithecidae	Stuffed		Juv			Do	Casp College	13 IX 1999
MZB 99 1445	<i>Macaca fascicularis</i>	Cercopithecidae	Stuffed		Inf			Do	Casp College	13 IX 1999
MZB 82 7154	<i>Macaca</i> cfr. <i>nemestrina</i>	<i>Papio</i>	Skull	M	Ad			U	Unknown	
MZB 82 7618	<i>Macaca nemestrina</i>	Cercopithecidae	Stuffed	M	Ad			U	Unknown	
MZB 82 0557	<i>Macaca silenus</i>	<i>Macaca silenus</i>	Stuffed	F	Ad			U	Unknown	
MZB 82 7598	<i>Macaca sylvanus</i>	<i>Inus sylvanus</i>	Stuffed		Juv	Àfrica		P	Casa Darder	31 I 1883
MZB 82 7620	<i>Macaca sylvanus</i>	<i>Inus sylvanus</i>	Stuffed	M	Juv	Morocco	1884	P	Casa Darder	01 XII 1884
MZB 94 0434	<i>Macaca sylvanus</i>	<i>Macaca sylvanus</i>	Skeleton	M	Ad		1979	Do	Barcelona Zoo	

Annex 1 (Cont.)

Family

Number	Taxon	PD	Sample	S	A	CP	CD	Ac	SAc	AcD
MZB20010685	<i>Macaca sylvanus</i>	<i>Macaca sylvanus</i>	Skull	F	Ad	Azrou (Morocco)	23 V 2001	C	Collectors	15 VI 2001
MZB20010686	<i>Macaca sylvanus</i>	<i>Macaca sylvanus</i>	Skull & other	M	Ad	Azrou (Morocco)	23 V 2001	C	Collectors	15 VI 2001
MZB20010690	<i>Macaca sylvanus</i>	Primates	Skull	M	Ad	Azrou (Morocco)	23 V 2001	C	Collectors	15 VI 2001
MZB20070497	<i>Macaca sylvanus</i>	<i>Macaca sylvanus</i>	Skull	F	Ad	Morocco (Causse Ainleuh)	08 VII 2007	Do	Collectors	02 VIII 2007
MZB20070498	<i>Macaca sylvanus</i>	<i>Macaca sylvanus</i>	Skull	M	Ad	Morocco (Causse Ainleuh)	08 VII 2007	Do	Collectors	02 VIII 2007
MZB20020789	<i>Macaca thibetana</i>	<i>Macaca thibetana</i>	Skeleton & stuffed	M	Ad		18 XI 2002	Do	Barcelona Zoo	19 XI 2002
MZB 82 7584	<i>Miopithecus</i> cfr. <i>agouensis</i>	<i>Miopithecus talapoin</i>	Stuffed	M	Ad			U	Unknown	
MZB 82 0339	<i>Miopithecus agouensis</i>	<i>Cercopithecus talapoin</i>	Skin		Ad			U	Unknown	
MZB 82 7456	<i>Miopithecus agouensis</i>	<i>Miopithecus talapoin</i>	Stuffed	F	Juv			U	Unknown	
MZB20010733	<i>Miopithecus agouensis</i>	Primates	Stuffed	M	Juv			Do	Salesians of Sarrià	11 VII 2001
MZB 82 7640	<i>Papio vel mndrillus</i>	Cercopithecidae	Mandibule	F	Ad			U	Unknown	

Annex 1 (Cont.)

Family

Number	Taxon	PD	Sample	S	A	CP	CD	Ac	SAC	AcD
MZB 82 7101	Cercopithecinae	Primates	Postcranial skeleton	M	Ad			U	Unknown	
MZB 82 0559	<i>Mandrillus leucophaeus</i>	<i>Papio leucophaeus</i>	Stuffed	M	Ad			U	Unknown	
MZB 82 7086	<i>Mandrillus leucophaeus</i>	<i>Papio leucophaeus</i>	Bones	F	Juv		1977	U	Barcelona Zoo	
MZB 91 0316	<i>Mandrillus leucophaeus</i>	<i>Papio leucophaeus</i>	Skeleton	F	Juv			Do	Barcelona Zoo	15 XI 1991
MZB 94 0152	<i>Mandrillus leucophaeus</i>	<i>Papio leucophaeus</i>	Skin	F	Ad		18 XI 1985	Do	Barcelona Zoo	27 I 1994
MZB 96 0412	<i>Mandrillus sphinx</i>	<i>Papio sphinx</i>	Skeleton	F	Ad		26 II 1996	Do	Barcelona Zoo	29 III 1994
MZB20060322	<i>Mandrillus leucophaeus</i>	<i>Papio leucophaeus</i>	Skeleton & other	M	Ad		22 VI 2006	Do	Barcelona Zoo	29 VI 2006
MZB 82 0556	<i>Mandrillus sphinx</i>	<i>Papio sphinx</i>	Other	M	Ad			U	Unknown	
MZB 82 7092	<i>Mandrillus sphinx</i>	<i>Papio sphinx</i>	Skull	M	Ad	Equatorial Guinea		U	Collectors	
MZB 82 7128	<i>Mandrillus sphinx</i>	<i>Papio sphinx</i>	Skull	F	Ad		1974	U	Barcelona Zoo	
MZB 82 7163	<i>Mandrillus sphinx</i>	<i>Papio sphinx</i>	Skull	M	Ad			U	Unknown	
MZB 82 7716	<i>Mandrillus sphinx</i>	<i>Papio sphinx</i>	Stuffed	M	Ad			U	Unknown	
MZB 94 0364	<i>Mandrillus sphinx</i>	<i>Papio sphinx</i>	Postcranial skeleton	M	Ad			Do	Barcelona Zoo	18 IV 1994
MZB 94 0672	<i>Mandrillus sphinx</i>	<i>Papio sphinx</i>	Postcranial skeleton	F	Ad			Do	Barcelona Zoo	18 IV 1994

Annex 1 (Cont.)

Family

Number	Taxon	PD	Sample	S	A	CP	CD	Ac	SAc	AcD
MZB 94 0748	<i>Mandrillus sphinx</i>	<i>Papio sphinx</i>	Appendicular skeleton	M	Sad		23 XI 1983	Do	Barcelona Zoo	18 IV 1994
MZB 94 0818	<i>Mandrillus sphinx</i>	<i>Papio sphinx</i>	Skeleton	F	Ad			Do	Barcelona Zoo	18 IV 1994
MZB 94 0828	<i>Mandrillus sphinx</i>	<i>Papio hamadryas</i>	Postcranial skeleton	M	Ad			Do	Barcelona Zoo	26 IV 1994
MZB 96 0411	<i>Mandrillus sphinx</i>	<i>Papio sphinx</i>	Skeleton	F	Juv		08 III 1996	Do	Barcelona Zoo	29 III 1996
MZB20020788	<i>Mandrillus sphinx</i>	<i>Papio sphinx</i>	Skeleton	M	Ad		06 XI 2002	Do	Barcelona Zoo	08 XI 2002
MZB 82 7247	<i>Papio</i> sp.	Primates	Mandibule					U	Unknown	
MZB 82 7307	<i>Papio</i> sp.	<i>Papio hamadryas</i>	Skull		Ad			U	Unknown	
MZB 94 1380	<i>Papio</i> sp.	<i>Papio</i>	Skeleton	F	Ad			Do	Barcelona Zoo	29 IX 1994
MZB 82 0564	<i>Papio</i> cfr. <i>hamadryas</i>	<i>Papio papio</i>	Mounted skeleton	F	Ad	Ethiopia	1921	U	Barcelona Zoo (probably)	0 0 1921
MZB 82 7624	<i>Papio hamadryas</i>	<i>Papio papio</i>	Stuffed	F	Sad	Àfrica		U	Barcelona Zoo (probably)	15 VI 1907
MZB 82 7752	<i>Papio hamadryas</i>	<i>Papio hamadryas</i>	Stuffed	M	Ad	Ethiopia		U	Barcelona Zoo (probably)	
MZB 82 7767	<i>Papio hamadryas</i>	<i>Papio hamadryas</i>	Stuffed	M	Ad	Ethiopia		U	Barcelona Zoo (probably)	
MZB 89 0022	<i>Papio hamadryas</i>	<i>Papio hamadryas</i>	Skeleton	M	Ad			Do	Barcelona Zoo	0 III 1989
MZB 92 0116	<i>Papio hamadryas</i>	<i>Papio hamadryas</i>	Skeleton	M	Ad			Do	Barcelona Zoo	13 I 1993

Annex 1 (Cont.)

Family

Number	Taxon	PD	Sample	S	A	CP	CD	Ac	SAc	AcD
MZB 94 0372	<i>Papio hamadryas</i>	<i>Papio hamadryas</i>	Appendicular skeleton		Sad			Do	Barcelona Zoo	18 IV 1994
MZB 82 7745	<i>Papio papio</i>	<i>Papio</i>	Stuffed	M	Ad			U	Jaume Balmes Institut	
MZB 82 7306	Colobinae	Primates	Skull		Inf			U	Unknown	
MZB 94 1389	<i>Colobus</i> sp.	<i>Macaca sylvanus</i>	Skeleton	M	Ad			Do	Barcelona Zoo	1983
MZB 90 0138	<i>Colobus</i> cfr. <i>guereza</i>	Primates	Skull		Ad			U	Unknown	
MZB 82 7748	<i>Colobus guereza</i>	<i>Colobus guereza</i>	Stuffed	M	Ad			U	Jaume Balmes Institut	
MZB 95 0353	<i>Colobus guereza</i>	<i>Colobus guereza</i>	Skeleton	M	Juv		25 VI 1995	Do	Barcelona Zoo	18 VII 1995
MZB 98 0014	<i>Colobus guereza</i>	<i>Colobus guereza</i>	Skeleton	M	Juv		05 II 1998	Do	Barcelona Zoo	16 II 1998
MZB 98 0015	<i>Colobus guereza kikuyuensis</i>	<i>Colobus guereza</i>	Skeleton	F	Ad		08 II 1998	Don	Barcelona Zoo	16 II 1998
MZB 82 0553	<i>Colobus guereza</i>	<i>Colobus guereza</i>	Stuffed	M	Ad	Gabon		P	Casa Darder	09 V 1889
MZB 82 8251	<i>Colobus satanas</i>	<i>Colobus guereza</i>	Stuffed		Ad	Equatorial Guinea		U	Collectors	
MZB 82 8252	<i>Colobus satanas</i>	<i>Colobus guereza</i>	Stuffed		Ad	Equatorial Guinea		U	Collectors	
MZB 82 8253	<i>Colobus satanas</i>	<i>Colobus guereza</i>	Stuffed		Ad	Equatorial Guinea		U	Collectors	
MZB 82 8254	<i>Colobus satanas</i>	<i>Colobus guereza</i>	Stuffed		Inf			P	Casa Unlauff	

Annex 1 (Cont.)

Family

Number	Taxon	PD	Sample	S	A	CP	CD	Ac	SAc	AcD
MZB 82 0555	<i>Piliocolobus pennantii</i>	<i>Colobus pennanti</i>	Stuffed	M	Ad			U	Unknown	
MZB 82 7733	<i>Semnopithecus</i> cfr. <i>achates</i>	Primates	Stuffed	M	Ad	Asia		U	Unknown	

Family Hylobatidae

MZB 82 7031	<i>Hylobates</i> sp.	Primates	Postcranial skeleton		Ad			U	Unknown	
MZB 82 0546	<i>Hylobates lar</i>	<i>Hylobates lar</i>	Stuffed	M	Ad			U	Unknown	
MZB 82 7617	<i>Hylobates lar</i>	<i>Hylobates</i>	Stuffed	F	Ad			U	Unknown	
MZB 94 0363	<i>Hylobates lar</i>	<i>Hylobates lar</i>	Skeleton		Juv			Do	Barcelona Zoo	18 IV 1994
MZB 82 0542	<i>Nomascus gabriellae</i> vel <i>siki</i>	<i>Hylobates concolor</i>	Stuffed	M	Juv			U	Unknown	

Family Hominidae

MZB 85 0243	Hominidae	Hominidae	Bones					U	Unknown	
MZB 82 7302	<i>Pan</i> vel <i>pongo</i>	<i>Pan troglodytes</i>	Skeleton	M	Juv			U	Unknown	
MZB 82 7174 Bis	<i>Pan</i> vel <i>gorilla</i>	<i>Pan troglodytes</i>	Skeleton		Juv			U	Unknown	
MZB 82 0562	<i>Gorilla</i> sp.	<i>Pan troglodytes</i>	Skull		Juv			U	Unknown	
MZB 82 7170	<i>Gorilla</i> sp.	<i>Gorilla gorilla</i>	Mandibule		Juv		1974	U	Barcelona Zoo	
MZB 82 0543	<i>Gorilla</i> cfr. <i>gorilla</i>	<i>Gorilla gorilla</i>	Skull	F	Juv			U	Unknown	
MZB 82 0544	<i>Gorilla</i> cfr. <i>gorilla</i>	<i>Gorilla gorilla</i>	Bones		Inf			U	Unknown	

Annex 1 (Cont.)

Family

Number	Taxon	PD	Sample	S	A	CP	CD	Ac	SAc	AcD
MZB 82 0548	<i>Gorilla</i> cfr. <i>gorilla</i>	<i>Gorilla gorilla</i>	Mounted skeleton		Juv			U	Unknown	
MZB 94 1075	<i>Gorilla</i> cfr. <i>gorilla</i>	<i>Gorilla gorilla</i>	Bones	M	Juv			Do	Barcelona Zoo	18 IV 1994
MZB 82 0545	<i>Gorilla gorilla</i>	<i>Gorilla gorilla</i>	Skull	M	Ad			U	Unknown	
MZB 82 0561	<i>Gorilla gorilla</i>	<i>Gorilla gorilla</i>	Skull	M	Ad			U	Unknown	
MZB 82 7153	<i>Gorilla gorilla</i>	<i>Gorilla gorilla</i>	Mandibule	M	Ad		1970	U	Barcelona Zoo	
MZB 82 7200	<i>Gorilla gorilla</i>	<i>Gorilla gorilla</i>	Postcranial skeleton		Juv		1973	Do	Barcelona Zoo	1973
MZB 82 7225	<i>Gorilla gorilla</i>	<i>Gorilla gorilla</i>	Skull	M	Ad			U	Unknown	
MZB 82 7799	<i>Gorilla gorilla</i>	<i>Gorilla gorilla</i>	Postcranial skeleton	M	Sad		1971	Do	Barcelona Zoo	1971
MZB 93 0008	<i>Gorilla gorilla</i>	<i>Gorilla gorilla</i>	Skeleton	F	Ad		19 VII 1989	Do	Barcelona Zoo	21 II 1992
MZB 94 0468	<i>Gorilla gorilla</i>	<i>Gorilla gorilla</i>	Postcranial skeleton	M	Juv			Do	Barcelona Zoo	18 IV 1994
MZB 94 0469	<i>Gorilla gorilla</i>	<i>Gorilla gorilla</i>	Postcranial skeleton	F	Juv			Do	Barcelona Zoo	18 IV 1994
MZB 94 0642	<i>Gorilla gorilla</i>	<i>Gorilla gorilla</i>	Skeleton	M	Inf		06 XI 1985	Do	Barcelona Zoo	18 IV 1994
MZB 96 0862	<i>Gorilla gorilla</i>	<i>Gorilla gorilla</i>	Skeleton	F	Ad	Equatorial Guinea	09 IX 1996	Do	Barcelona Zoo	03 X 1996
MZB 97 0053	<i>Gorilla gorilla</i>	<i>Gorilla gorilla</i>	Skeleton & other	F	Ad	Equatorial Guinea (río Muni)	06 II 1997	Do	Barcelona Zoo	10 II 1997

Annex 1 (Cont.)

Family

Number	Taxon	PD	Sample	S	A	CP	CD	Ac	SAc	AcD
MZB 99 1309	<i>Gorilla gorilla</i>	<i>Gorilla gorilla</i>	Mounted skeleton	M	Ad			Do	Casp College	13 IX 1999
MZB 2001 0681	<i>Gorilla gorilla</i>	<i>Gorilla gorilla</i>	Skeleton	M	Inf		16 VIII 2001	Do	Barcelona Zoo	21 VIII 2001
MZB 2002 1261	<i>Gorilla gorilla</i>	<i>Gorilla gorilla</i>	Skin	M	Ad			Do	Barcelona Zoo	11 XII 2002
MZB 2003 1582	<i>Gorilla gorilla</i>	<i>Gorilla gorilla</i>	Skeleton	M	Ad		24 XI 2003	Do	Barcelona Zoo	10 XII 2003
MZB 2003 0544	<i>Gorilla gorilla gorilla</i>	<i>Gorilla gorilla</i>	Skeleton & stuffed	M	Ad		13 IV 2003	Do	Barcelona Zoo	15 IV 2003
MZB 82 0547	<i>Pan</i> sp.	<i>Gorilla gorilla</i>	Skull		Juv	Equatorial Guinea		Do	Collectors	22 II 1888
MZB 83 0170	<i>Pan</i> sp.	Pongidae	Mandibule		Juv			U	Unknown	
MZB 82 7100	<i>Pan</i> cfr. <i>troglodytes</i>	<i>Pan troglodytes</i>	Skull		Juv			U	Unknown	
MZB 82 0565	<i>Pan troglodytes</i>	<i>Pan troglodytes</i>	Mounted skeleton		Juv			U	Unknown	
MZB 82 7721	<i>Pan troglodytes</i>	<i>Pan troglodytes</i>	Stuffed	M	Sd			U	Unknown	
MZB 82 7753	<i>Pan troglodytes</i>	<i>Pan troglodytes</i>	Stuffed	M	Juv			U	Jaume Balmes Institut	
MZB 82 7764	<i>Pan troglodytes</i>	<i>Pan troglodytes</i>	Stuffed	F	Juv			U	Unknown	
MZB 88 0026	<i>Pan troglodytes</i>	<i>Pan troglodytes</i>	Skull	F	Ad			Do	Teresa Ràfols Vda. Juvr	10 VI 1988
MZB 90 0066	<i>Pan troglodytes</i>	<i>Pan troglodytes</i>	Skeleton	M	Ad		0 IX 1990	Do	Barcelona Zoo	
MZB 93 0074	<i>Pan troglodytes</i>	<i>Pan troglodytes</i>	Skeleton	F	Ad			Do	Barcelona Zoo	28 IX 1993
MZB 94 0353	<i>Pan troglodytes</i>	<i>Pan troglodytes</i>	Postcranial skeleton	M				Do	Barcelona Zoo	18 IV 1994

Annex 1 (Cont.)

Family

Number	Taxon	PD	Sample	S	A	CP	CD	Ac	SAc	AcD
MZB 95 0258	<i>Pan troglodytes</i>	<i>Pan troglodytes</i>	Skeleton	M	Ad		10 III 1995	Do	Barcelona Zoo	17 III 1995
MZB 96 0863	<i>Pan troglodytes</i>	<i>Pan troglodytes</i>	Skeleton	F	Sad		17 IX 1996	Do	Barcelona Zoo	03 X 1996
MZB 2000 0282	<i>Pan troglodytes</i>	<i>Pan troglodytes</i>	Skeleton	F	Ad		23 III 2000	Do	Barcelona Zoo	29 III 2000
MZB 2005 0455	<i>Pan troglodytes</i>	<i>Pan troglodytes</i>	Skull	F	Sad	Equatorial Guinea (Bata)		Do	M. Teresa Brugé Medardo	07 VII 2005
MZB 99 1311	<i>Pongo</i> sp.	<i>Pongo pygmaeus</i>	Stuffed	F	Juv			Do	Casp College	13 IX 1999
MZB 82 7246	<i>Pongo</i> sp.	<i>Pan troglodytes</i>	Skeleton	F	Juv		1975	U	Barcelona Zoo	
MZB 94 0358	<i>Pongo</i> cfr. <i>abellii</i>	<i>Pongo pygmaeus abellii</i>	Skeleton		Juv			D	Barcelona Zoo	18 IV 1994
MZB 91 0218	<i>Pongo</i> cfr. <i>abellii</i>	<i>Pongo pygmaeus</i>	Postcranial skeleton	F	Ad			Do	Barcelona Zoo	19 XI 1991
MZB 94 0703	<i>Pongo abelii</i>	<i>Pongo pygmaeus</i>	Postcranial skeleton	F	Ad			Do	Barcelona Zoo	18 IV 1994
MZB 94 0459	<i>Pongo abellii</i>	<i>Pongo pygmaeus abellii</i>	Appendicular skeleton	M	Juv			Do	Barcelona Zoo	18 IV 1994
MZB 94 0700	<i>Pongo abellii</i>	<i>Pongo pygmaeus</i>	Postcranial skeleton		Juv			Do	Barcelona Zoo	18 IV 1994
MZB 2001 0286	<i>Pongo pygmaeus</i>	<i>Pongo pygmaeus</i>	Skeleton	M	Ad		11 VI 2001	Do	Barcelona Zoo	18 VI 2001